

Children's academic performance is impacted by hospitalisation



Time in hospital sets back tens of thousands of children's learning each year, but targeted support can help them catch up

The Conversation

More than one million children in Australia experience a serious injury or have a long-term chronic health condition such as asthma or diabetes. Of these, more than 100,000 will spend time in hospital each year.

Associate Professor Rebecca Mitchell has led this body of research looking at the impact of injury or chronic illness on children's academic performance and hospital use. In this article for *The Conversation*, Associate Professor Mitchell summarises the research findings and suggests opportunities to provide better support for children.

[READ MORE](#)

Rethinking technology for families



New exploration of how technologies can account for and engage families in healthcare

JAMIA

Families often play a crucial yet largely unacknowledged role in an individual's healthcare journey. A key way to support and engage families is through the rethinking of how technology is used and designed. Professor Enrico Coiera says "Family informatics is a necessary evolution in the scope of health informatics."

[CLICK FOR THE JOURNAL ARTICLE](#)

Last chance to register for 21st celebration

21st anniversary celebration

CENTRE FOR HEALTH INFORMATICS



AUSTRALIAN INSTITUTE
OF HEALTH INNOVATION



The reinvention of healthcare - two decades of digital transformation

Monday July 11 - on campus and online

With a stellar line up of speakers including Professors Michael Kidd AM, Enrico Coiera, Johanna Westbrook, Vitali Sintchenko and Associate Professor Adam Dunn, join us to celebrate the 21st anniversary of the Centre for Health Informatics.

Together we will journey through the decades, showcasing our ground-breaking research and industry-changing successes. We'll also look to the future with ambitious and sometimes challenging ideas.

The 21st Anniversary Symposium will open with Macquarie University's Vice-Chancellor Professor Bruce Downton and include talks from our alumni, colleagues and friends, bringing to life where we were, where we have been, and above all, where we are going.

[REGISTER NOW](#)

Join our AIHI Webinar

**AIHI
webinar
series**



Innovation in the management of patients with heart conditions

Wednesday, July 20 11am AEST

In this webinar, we will discuss with cardiologists how a comprehensive and integrated approach to caring for people with common, rare or complex heart conditions delivers better support for patients and their families as well as clinicians.

Registration will also ensure you receive a link to the

recording.

[REGISTER NOW](#)

How to better support emergency care



Emergency departments are clogged and patients are waiting for hours or giving up. What's going on?

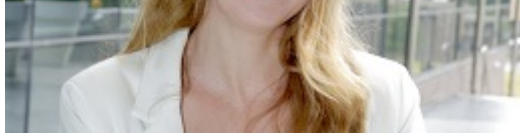
The Conversation

Of the 8.8 million presentations at emergency departments each year, one in three people wait more than four hours to be treated and admitted to a ward for further care, or to be discharged.

Associate Professor Robyn Clay-Williams and Professor Henry Cutler discuss how our fragile public health system and its staff need urgent attention before emergency departments can recover.

[READ MORE](#)

[More research news and events](#)



New course - Introduction to economic evaluation

Register now

Are you a policymaker, researcher, or work in health and want to know more about the economics of healthcare? Health economist, Associate Professor Bonny Parkinson, is offering an in-person short introductory course on health economic evaluation.

The course will introduce attendees to the key concepts and how this information can inform policy decisions.

[REGISTER NOW](#)



Creating the space for successful co-design

Public Health Research and Practice

Promoting conditions conducive to the meaningful engagement of consumers, health service providers and other groups involved in co-design is essential for successful co-design. This paper reports key findings on the evaluation of a project to co-design strategies which improve the safety of culturally and linguistically diverse patients in cancer care.

[CLICK FOR THE JOURNAL ARTICLE](#)



Register now for ISQua 2022

Brisbane, October 17-21

With delegates from up to 80 high-, middle- and low-income countries converging on this premier safety and quality conference, there's never been a better opportunity to share in the experience.

Early bird tickets close July 27.

[REGISTER NOW](#)



New book from editors Rapport, Clay-Williams and Braithwaite

Explore the wide spectrum of ideas, approaches, and examples that make up the emerging field of implementation science. Essays are concise, engaging and informative.

[READ MORE](#)

Save the date



[Visit the website](#)

Save the date for the National Medication Safety Symposium

September 21 2022

Registrations will open soon for the National Medication Safety Symposium onsite at Macquarie University. We will be updating the website with the registration link and program details shortly.

Work or study with us



We welcome you to find out more about these job and higher degree research opportunities at AIHI.

[JOBS](#)

[Research Fellow](#)

[Postdoctoral Research Fellow](#)

[Senior Research Fellow](#)

[Multi-Level Research Fellow in Applied Biostatistics](#)

Coming soon: We have a number of new projects starting soon so please visit this [link](#) for new jobs being added regularly (search for AIHI).

PHD SCHOLARSHIPS

[Spinal cord injury: examining readiness for implementation of a care intervention](#)

[Co-designing culturally relevant end of life care in cancer](#)

[Digital health for patients and healthcare consumers](#)

[RuralKids GPS - delivering equitable care to children in rural NSW](#)

PHD PROJECT OPPORTUNITIES

[Models of care for Type 1 Diabetes](#)

[Experiences and opinions of Australian health consumers](#)

Visit our website aihi.mq.edu.au

(CHRIS)



Prof Johanna Westbrook

Centre for Health Systems and Safety Research (CHSSR)



Prof Enrico Coiera

Centre for Health Informatics (CHI)



Prof Henry Cutler

Macquarie University Centre for the Health Economy (MUCHE)

AUSTRALIAN INSTITUTE OF HEALTH INNOVATION

Macquarie University | ABN 90 952 801 237 | CRICOS
Provider 00002J

The Australian Institute of Health Innovation (AIHI) at Macquarie University conducts world-class research with national and international research communities, governments, policymakers, providers of health services, managers, clinicians, patients and the community. Our work underpins health reforms and systems improvement, providing new tools, perspectives and evidence to help stakeholders who are interested in making the health system more effective, efficient and productive. Our overarching aim is to produce new, high quality research evidence to support change, prevention and improvement.

[Contact Us](#) | [Privacy](#) | [Follow us on Twitter](#)

Disclaimer: Information given is correct at the time of distribution but is subject to change without notice. The University has the right to alter the content or impose terms and conditions in relation to a program at any time.

[Preferences](#) | [Unsubscribe](#)