

\$2.8m to reduce emergency wait times

Medical Research
Future Fund



Help for the vulnerable with new federal research funding

Medical Research Future Fund

Consumers who are older, have a disability, present with a mental health condition, are Aboriginal or Torres Strait Islander, or come from culturally and linguistically diverse backgrounds, will be involved in research to improve the safety and quality of care they receive when visiting a hospital emergency department.

Macquarie University will lead this project addressing the needs of people with complex health conditions, who when they attend an emergency department, often spend longer than average there and have worse outcomes than the general population, including greater likelihood of multiple return visits.

Macquarie University has been awarded \$2,836,550 from the Medical Research Future Fund for this 5-year project led by Associate Professor Robyn Clay-Williams at the Australian Institute of Health Innovation, Macquarie University, who says "These communities have higher rates of presentation to emergency departments than other Australians and improving their care will reduce hospital waiting times for

everyone.”

[READ MORE](#)

Join our AIHI Webinar



How can we achieve diverse consumer engagement in health service research and improvement?

Speaker: Associate Professor Reema Harrison

Date: Tuesday 17 May 2022, 11 am

The drive for person centric healthcare to enhance safety and quality is gaining traction, creating opportunities for healthcare consumers to inform health systems, services, and their governance. These opportunities are coupled with growing recognition of the value of consumer engagement in conceptualising and designing health services research. This webinar will explore what these opportunities mean for people from culturally and linguistically diverse backgrounds, current challenges and the approaches required to support more meaningful involvement.

[REGISTER NOW](#)

Majority at risk of a fall in aged care are overlooked



Around 66% of people at risk of a fall in aged care are missed by routine assessment

With falls being one of the most common causes of harm to people in residential aged care facilities, new research shows that a commonly used method of identifying people at risk of a fall is not effective.

The Macquarie University research, led by Dr Nasir Wabe, shows that the Peninsula Health Falls Risk Assessment Tool, widely used in residential aged care facilities across Australia, accurately predicted a fall, within 6 months of the use of the tool, in only 33.6% of residents, which statistically demonstrates poor performance.

This study is the first to assess the effectiveness of this widely used tool and points to ways it can be improved to provide better access to fall prevention strategies for vulnerable people, Dr Wabe said.

[READ MORE](#)

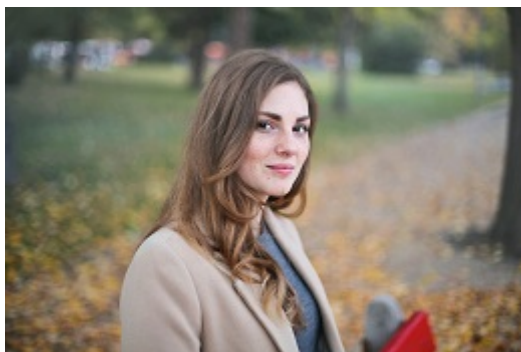
Research news and events

The private health insurance rebate has cost taxpayers \$100 billion and only benefits some. Should we scrap it?

The Conversation

Professor Henry Cutler and Dr Anam Bilgrami reflect on why the rebate was introduced and whether it represents value for money.

[READ MORE](#)



Covid pandemic hits women and young people hardest

MJA InSight+

Dr Louise Ellis, Professor Jeffrey Braithwaite and Associate Professor Yvonne Zurynski analyse 5100 responses to the Australian Health Consumer Sentiment Survey on people's psychological and financial circumstances.

[READ MORE](#)

There is, however, still much to do to ensure that all Australians benefit from the use of AI in healthcare and we do no harm.

[READ MORE](#)

Introduction to economic evaluation course

9 September 2022

Are you a policymaker, researcher, or work in health and want to know more about health economic evaluation? The Macquarie University Centre for the Health Economy will be running an in-person short introductory course on Health Economic Evaluation.

The course will introduce attendees to key concepts and how this information can inform policy decisions.

[READ MORE](#)

Save the date



Join the Centre for Health informatics' 21st anniversary celebration

11 July 2022

Soon we will be inviting you to join us in celebrating the 21st anniversary of the Centre for Health Informatics with a full day of stimulating presentations

Save the date



Save the date for the National Medication Safety Symposium

21 September 2022

Registrations will open soon for the National Medication Safety Symposium onsite at Macquarie University.

Engage with the latest evidence on how electronic systems support safer care, along with recommendations for improving system design and implementation processes.

Visit our website aihi.mq.edu.au



Prof. Johanna Westbrook

Centre for Health Systems and Safety Research (CHSSR)



Prof. Enrico Coiera

Centre for Health Informatics (CHI)



Prof. Henry Cutler

Macquarie University Centre for the Health Economy (MUCHE)

AUSTRALIAN INSTITUTE OF HEALTH INNOVATION

Macquarie University | ABN 90 952 801 237 | CRICOS
Provider 00002J

The Australian Institute of Health Innovation (AIHI) at Macquarie University conducts world-class research with national and international research communities, governments, policymakers, providers of health services, managers, clinicians, patients and the community. Our work underpins health reforms and systems improvement, providing new tools, perspectives and evidence to help stakeholders who are interested in making the health system more effective, efficient and productive. Our overarching aim is to produce new, high quality research evidence to support change, prevention and improvement.

[Contact Us](#) | [Privacy](#) | [Follow us on Twitter](#)

Disclaimer: Information given is correct at the time of distribution but is subject to change without notice. The University has the right to alter the content or impose terms and conditions in relation to a program at any time.

[Preferences](#) | [Unsubscribe](#)