



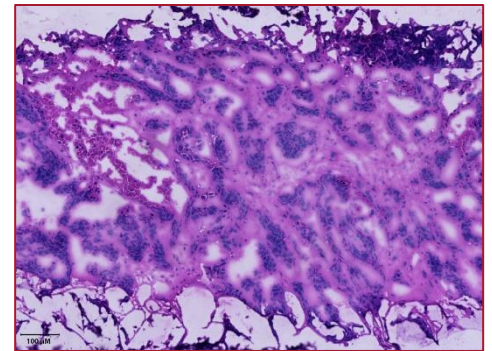
MACQUARIE UNIVERSITY CANCER BIOBANK

MQCB00004A REPORT

07 OCTOBER 2022

CLINICAL SUMMARY

Sex: Female
Age: 57
Pre-operative radiotherapy: Unknown



50% Tumour Content

HISTOPATHOLOGY

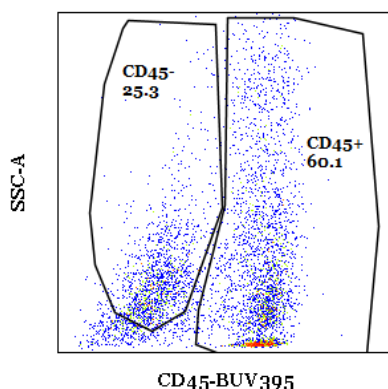
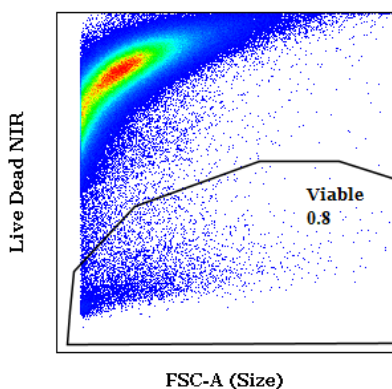
Specimen type: Breast cancer, liver metastasis
Tumour site: Left lateral segment of liver
Tumour type: Metastatic carcinoma of breast origin
Tumour stage: HER-2 negative, ER weak, moderate and strong in 50%, PR moderate and strong in 70%

NEXT GENERATION GENOME/TRANSCRIPTOME DATA

Provider: Australian Genome Research Facility - 150bp paired end
Data yield: Germline DNA: 527,225,413 paired end, 159.22 Gbp
 Tumour DNA: 864,747,635 paired end, 261.15 Gbp
 Tumour RNA: 58,305,104 paired end, 17.61 Gbp

Top pathogenic somatic mutations			
Gene	Alteration	Allele Frequency	Function
PIK3CA	c.3129G>C, p.M1043I	93%	Gain
PIK3CA	c.1624G>A, p.E542K	95%	Gain
TP53	c.818G>A, p.R273H	76%	Neomorphic
ESR1	c.1610A>C, p.Y537S	47%	Gain
TSC1	c.989dupT, p.S331fs*10	78%	Loss

FLOW CYTOMETRY TUMOUR DISSOCIATE ANALYSIS



Cell Type	(%) of subset
Viable cells	0.8
Viable>CD45-	25.3
Viable>CD45+	60.1
Viable>CD45+>B cells	0.1
Viable>CD45+>CD4+/Foxp3-	4.0
Viable>CD45+>Tregs	2.4
Viable>CD45+>CD8+	6.6
Viable>CD45+>Monocytes/Macrophages	61.1