



MACQUARIE
University
SYDNEY · AUSTRALIA

Australian Institute of Health Innovation



Australian Institute of Health Innovation

A WORKPLACE LIKE NO OTHER

Dear colleague

Thank you for your interest in working with the Australian Institute of Health Innovation (AIHI) at Macquarie University.

AIHI is a globally recognised research-intensive institute with a steadfast commitment to improving healthcare services and health systems in Australia and internationally. We are located within Australia's first fully integrated academic health sciences centre, MQ Health at Macquarie University – ranked in the top one per cent of universities worldwide. We provide research, evaluations, evidence-based advocacy, implementation science and consulting expertise – all crafted to strengthen health systems.

Our overarching goal is to design, execute and disseminate evidence to improve the performance of healthcare so that person-centred care is delivered efficiently and effectively over the long term – that is, sustainably.

AIHI is the largest health services research institute in Australia and one of the largest of its kind internationally. We are engaged with more than 100 projects annually representing more than \$80 million in funding.

We have a thriving, inclusive environment that promotes excellent scholarship, collaboration, research activities and translation of evidence into practice.

We are proud that AIHI is known for productive and highly valued collaborations with patients, clinicians, policymakers, health sector organisations and researchers.

Our work has been highly impactful, contributing to healthcare projects and initiatives with the Australian Government, state and territory governments, and the private sector. AIHI also collaborates with major international agencies – including the World Health Organization, the International Society for Quality in Health Care and the Organisation for Economic Co-operation and Development (OECD) – and on various of health reform with governments, policymakers and academics worldwide.

The Institute's success is attributable to our first-class academics and visiting researchers, supported by a highly skilled team of professional staff. We value our higher degree research students and early career researchers as the next generation of experts, and we contribute to multiple teaching programs within Macquarie University. AIHI also designs and contributes to industry-based education programs.

In conjunction with my fellow directors – Professor Johanna Westbrook, Professor Enrico Coiera and Professor Henry Cutler – I am proud to lead the institute. We always welcome high-calibre candidates to join our team.

Kind regards

Professor Jeffrey Braithwaite
FOUNDING DIRECTOR



Professor Jeffrey Braithwaite

Where you will work

The Australian Institute of Health Innovation (AIHI) has the largest grouping of health services researchers in Australia and is one of the largest in the world. Reflecting the diverse and multidimensional nature of its research, AIHI attracts highly skilled professionals (eg clinicians, scientists, social scientists, psychologists, engineers, epidemiologists, informatics experts, economists, statisticians and analysts) in order to develop expert communities of practice, create multidisciplinary research teams and engage in synergistic networking and co-authorship with many partners.

AIHI is led by Founding Director Professor Jeffrey Braithwaite, an internationally recognised health services and systems researcher. Directors alongside Professor Braithwaite are: Professor Johanna Westbrook, a leading informatics and patient safety researcher; Professor Enrico Coiera, a renowned informatics and AI expert; and Professor Henry Cutler, a prominent health economist.

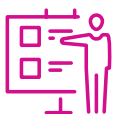
AIHI comprises four independent, complementary and highly collaborative Macquarie University research centres, alongside three additional NHMRC-funded centres. Each centre takes a systems perspective to solve healthcare problems using innovative and wide-ranging research methods. The University centres are:

- Centre for Healthcare Resilience and Implementation Science
- Centre for Health Informatics
- Centre for Health Systems and Safety Research
- Macquarie University Centre for the Health Economy.

AIHI's leadership in translational health services research is further evidenced by the innovative work of three NHMRC-funded centres:

- NHMRC Partnership Centre for Health System Sustainability
- NHMRC Centre of Research Excellence in Digital Health
- NHMRC Centre of Research Excellence in Implementation Science in Oncology.

AIHI AT A GLANCE



\$60.6M

Enterprise value of projects under AIHI management



\$64.7M

Enterprise value of projects involving AIHI and managed elsewhere



148

Research projects under direct AIHI management or in collaboration with others

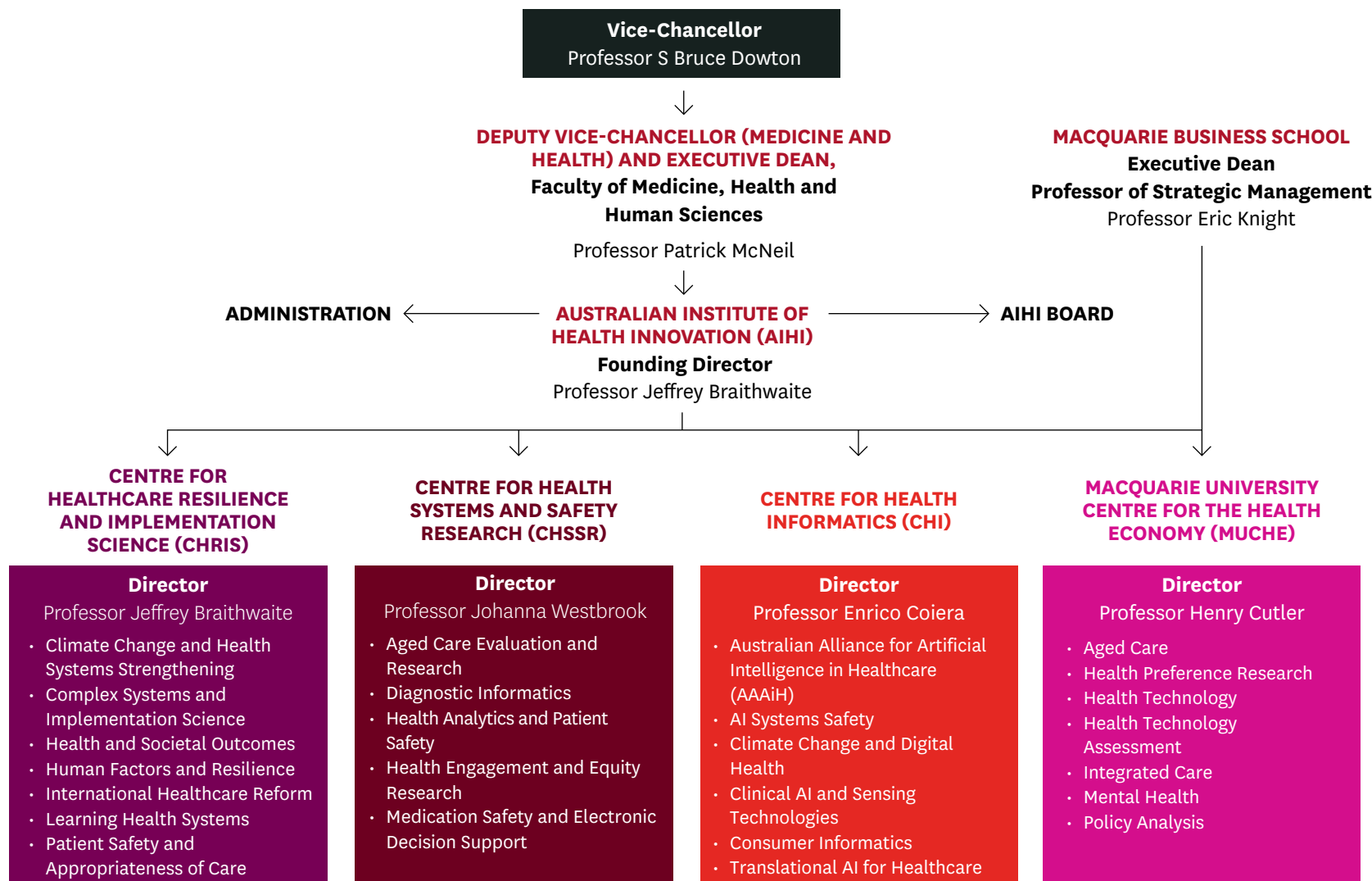


326

The number of research outputs produced by AIHI annually



Organisation chart



About Macquarie University

Macquarie University is recognised globally for its pre-eminence in key research disciplines, as well as producing graduates who are among the most sought-after professionals in the world.

Since our foundation in 1964, we have aspired to be a different type of university: one unbound by ivory towers and sandstone walls. Rather, we are focused on fostering collaboration between students, academics, industry and society – and on encouraging all to traverse the boundaries of their own perspectives and effect change.

The expansive park-like campus of Macquarie University, just 15 kilometres from the centre of Sydney, is unrivalled in any cosmopolitan city in the world. We also offer world-class facilities at our CBD campus to create a premium learning experience for executive and postgraduate students.

Our high-tech library, private teaching hospital, cutting-edge facilities, excellent transport links and proximity to global companies located in the Connect Macquarie Park Innovation District offer considerable opportunities for growth and development of research and commercial partnerships.



Macquarie at a glance



**RANKED #130
IN THE WORLD**

and #10 in Australia

QS World University Rankings, 2024



**40,000+ WORKPLACE
EXPERIENCES**

or community experiences through our
PACE (Professional and Community
Engagement) partnerships



**4000+ PARTNER
ORGANISATIONS**

across Australia and around the
world, providing access to industry
contacts that help develop valuable
employability skills



**ONLY UNIVERSITY
IN AUSTRALIA**

with its own metro station



**LOCATED IN SYDNEY'S
LARGEST BUSINESS PRECINCT**

only 15 kilometres from the
Sydney CBD



**190 PARTNER UNIVERSITIES
FOR STUDENT EXCHANGE**

in more than 40 countries



**44,000+ CONNECTED
STUDENTS**

from more than 129 countries



**\$1 BILLION INVESTED TO CREATE
A COLLABORATIVE CAMPUS**

with world-class facilities
and infrastructure



WALLUMATTAGAL CAMPUS

is set on 126 hectares of
stunning parkland



**225,000 ALUMNI IN OUR
INTERNATIONAL COMMUNITY**

from more than 155 countries



3 SUBJECTS

ranked in the top 50 globally
and 7 in the top 100

QS World University Rankings by Subject, 2023



**RANKED #8
IN AUSTRALIA**

for employment outcomes

QS World University Rankings, 2024



**AUSTRALIA'S FIRST FULLY
INTEGRATED HEALTH PRECINCT**

centred around our on-campus
hospital and clinics



**40+ SINGLE
BACHELOR DEGREES**

many of which are designed
in consultation with industry



**100% OF
RESEARCH ACTIVITY**

rated at world standard or above

Excellence in Research for Australia, 2018

**AUSTRALIAN INSTITUTE OF
HEALTH INNOVATION**

Macquarie University
Level 6, 75 Talavera Road
North Ryde
NSW 2109 Australia

E: aihi@mq.edu.au

T: +61 (2) 9850 2400

aihi.mq.edu.au

[@AIHI_MQ](https://twitter.com/AIHI_MQ)



MACQUARIE
University
SYDNEY • AUSTRALIA

PHOTOS: Morris McLennan, Jesse Taylor
and Paul Wright

CRICOS Provider 00002J
(HRE43791)