

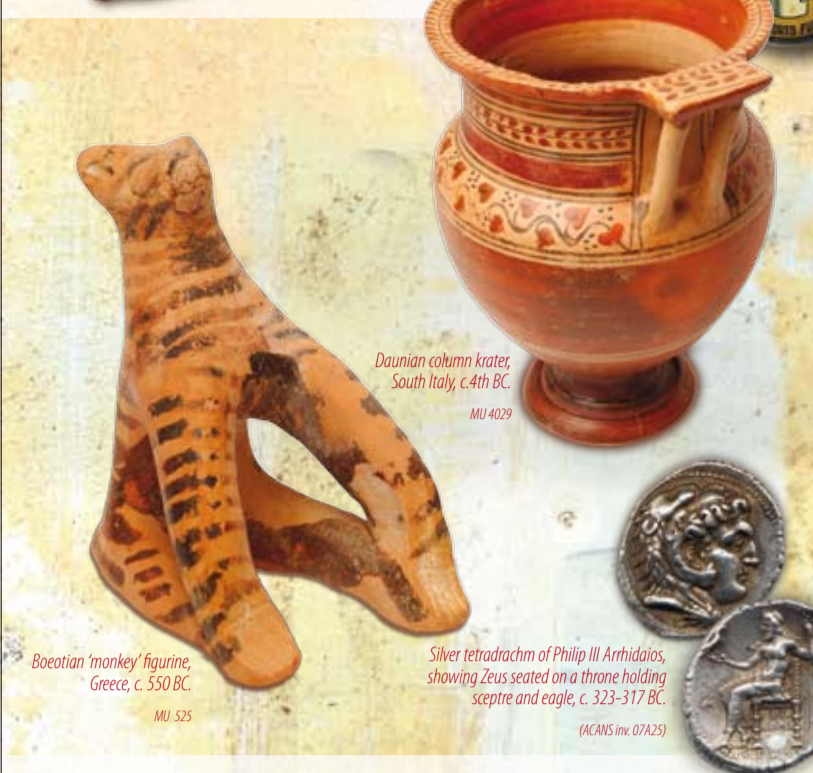


## MUSEUM OF ANCIENT CULTURES

**Themes:** The cultures of the Mediterranean World (Egypt, Greece, Cyprus, Israel, Palestine, Rome, Jordan, Jericho); Writing through the ages; New Testament studies based on papyri (the Museum has the largest collection of papyri in the Southern Hemisphere); Greek and Roman coins.

**Visits:** Junior and Senior high school programs a specialty; Gifted and Talented programs by design for upper Primary and Junior high school students; community and church groups also welcome; continuing education courses. Education programs can be arranged to visit your school by negotiation.

**Highlights:** Whole collection of 6000 items (Egyptian, Greek, Roman, Cypriot, Israel, Mesopotamian and ancient Egyptian material held); one of seven collections in Australia. Boeotian black-figured cup; Samian-ware bowl; Egyptian mummy and sarcophagus; three sculptural fragments of Egyptian Governor Memi; papyrus collection including the oldest known fragment of the Acts of the Apostles and fragments of Homeric text; and Latin and Greek stone inscriptions.



Daunian column krater, South Italy, c.4th BC. MU 4029

Boeotian 'monkey' figurine, Greece, c. 550 BC. MU 525

Silver tetradrachm of Philip III Arrhidaios, showing Zeus seated on a throne holding sceptre and eagle, c. 323-317 BC. (ACANS inv. 07425)

## AUSTRALIAN HISTORY MUSEUM

**Themes:** Indigenous Australia; Immigration; Women, War and Society, Domestic & Working Life

**Visits:** Stage 6 Modern History WWI Core program a specialty; Stage 5 programs also available. Community groups, special interest groups and researchers welcome, regularly rotating temporary exhibitions. Collection also accessible to researchers via on-line database.

**Highlights:**

- An extensive WWI collection including diaries, letters, recruitment posters, ephemera, medals and an exploded shell casing from the Western Front.
- An array of objects, pamphlets, official documents, banners and ephemera representing one individual's 12 months spent living in the Aboriginal Tent Embassy in 2003 (on display).
- Vast collection of souvenir wares from the 1888 centenary through to royal visits, Federation, the opening of the Harbour Bridge and 1950's tourist wares.



Six-20 'Brownie' camera c.1940. Object No 41000174

Bushell's commemorative tea tin, opening of first Federal Parliament Canberra by Duke of York, c.1927. Object No 410000980

Baby 'grip-tight' feeder, produced in Australia c.1930. Object No 410003363

WWI tin badge c.1919. Object No 41000174

## SCULPTURE PARK

**Theme:** Exhibiting works predominantly by contemporary Australian sculptors and located in the grounds of the University; sculptures made from a variety of materials are on exhibition including sandstone, steel, stainless steel, painted steel, bronze, aluminium, copper, concrete, wood, and ceramics. The Park is one of the largest of its kind in the Southern Hemisphere and has been developed to enrich the cultural aesthetic of the campus for students, staff and members of the public.

**Visits:** Both guided and self-guided tours are available to visitors of all ages. Please contact the curator using the details on the back of this brochure or consult the art gallery website: [www.artgallery.mq.edu.au](http://www.artgallery.mq.edu.au).

**Highlights:** Our largest sculpture *From Northpoint*, copper, 1970, by Margel Hinder, shows a large spherical form with moving central core, originally designed as a public fountain. Also in copper and enamel is a large wall sculpture by Lyndon Dadswell *The Wildflower State*, 1958-1960 which is a wonderful example of Australian sculpture from this time period. We also display indoors a fine example of one of Australia's preeminent sculptors, Robert Klippel, with his wood assemblage, *Opus 769*, 1989. Other sculptors represented include - Geoffrey Bartlett, Rae Bolotin, Gary Deirmendjian, Geoffrey Ireland, Anthony Pryor, Jan Shaw, Michael Snape, Daniel Templeman, and Trevor Weekes, to name but a few.



'Entropy' by Anthony Pryor, huon pine, steel and granite, 1980-82

'Tangible' by Jan Shaw, sandstone, 1992

'Beacon' by Errol Davis, stainless steel, 1992

## EARTH SCIENCES MUSEUM

**Themes:** Displays of the materials of our planet - minerals, rocks and fossils. There are also displays on earthquakes, volcanoes and soils. The museum is adjacent to the Earth Sciences' Garden that features plants from Gondwana and Laurasia with a long fossil history (living fossils). The exhibition area also includes temporary work by students of Macquarie University's Museum Studies program.

**Visits:** Tours combined with other museums at Macquarie are a specialty. Pre-arranged tours including a laboratory component of relevance to the Stage 6 Earth and Environmental Science syllabus are available.



Fossil fish

Amethyst

Crocoite

Fossil fern

## BIOLOGICAL SCIENCES MUSEUM

**Biological themes:** Environmental and systematic exhibitions highlighting taxonomy and biodiversity; live exhibits; skeleton of *Tyrannosaurus bataar* from the Gobi Desert (displayed in Library) and dinosaur footprints. The Biological Sciences Museum is an important academic, teaching and research resource for the Department of Biological Sciences. It also serves as a recognised artistic and cultural centre for the University and the local community.

**Visits:** Primary, secondary and adult education programs by prior arrangement.

**Highlights:** Aboriginal artifacts, including stone artefacts from 250 locations, including some collected prior to 1967. Wooden artefacts include boomerangs, spears, woomeras, coolamons and clubs from most states of Australia, including prehistoric artifacts from NSW. Essentially a reference collection for teaching and research; appointment required.



## IEC ART COLLECTION

**Introduction:** The Institute of Early Childhood (IEC) Art Collection, established within a Liberal Arts tradition in the early twentieth century, is a significant element of the cultural history of the Institute and is integral to the teaching program.

The Collection developed from artefacts at the Sydney Kindergarten Teachers' College which was established in 1897. Gradual acquisition of works occurred through amalgamations with the Nursery School Teachers' College (1981), Sydney College of Advanced Education (1981), and finally, the formation of the Institute of Early Childhood in 1992. With the completion of building X5B in 1994, works from the IEC Art Collection were hung with consideration of ways that they would be used in the teaching program.

**Themes:** The IEC Art Collection includes a range of works by Australian artists including a number of important works by Aboriginal artists and items of special interest such as Middle Eastern textiles. Media include bark, wood, canvas, ceramics and silk. Of special note are works by Margaret Preston, Charles Blackman, Colin Lanceley, John Olsen, Cressida Campbell, Sally Morgan, Bronwyn Bancroft and Mandy Martin.



'Kitchen by the Sea' John Olsen

## COMMUNITY ENGAGEMENT

**Balmain Sinfonia:** The Balmain Sinfonia is the Orchestra-in-Residence at Macquarie University. It performs on a quarterly basis in Macquarie Theatre. Further information can be found at the website: <http://www.balmainsinfonia.com.au>

**Macquarie University Singers:** One of the longest established groups in Macquarie University, the Singers have a wide repertoire, and perform on and off campus on a bi-monthly basis. Further information can be found at the website: [www.mus.org.au](http://www.mus.org.au)

**Music on Winter Sundays:** Music on Winter Sundays features a range of soloists, brass bands and the work of Macquarie University students in the Department of Contemporary Music. Further information can be found at: <http://www.mq.edu.au/community>

**Movies@Macquarie:** Featuring a wide range of movies, Movies@Macquarie is held six times a year at Macquarie Theatre. More information can be found at: <http://www.pr.mq.edu.au>

**Astronomy@Macquarie:** Two astronomy open nights and a school of astronomy are held each year. The observatory is open to the public on Fridays from Feb - Nov and other times by arrangement. Planetarium shows can also be arranged. [www.astronomy.mq.edu.au](http://www.astronomy.mq.edu.au)

**Library Exhibition Space:** Exhibition Space is available in the Library. For exhibition guidelines go to: <http://www.lib.mq.edu.au/exhibitions/guidelines.html>, or contact Robin Walsh: [robin.walsh@library.mq.edu.au](mailto:robin.walsh@library.mq.edu.au), phone: 9850 7554



## LACHLAN MACQUARIE ROOM

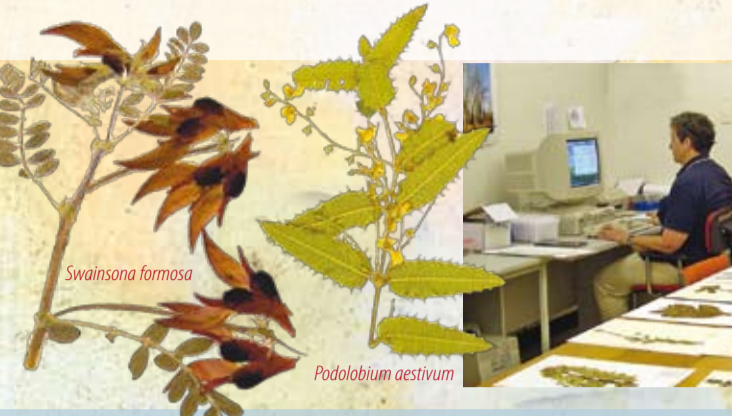
**Theme:** Timber panelling, windows, shutters, doors and fireplace of the parlour of Governor Macquarie's house on the Isle of Mull, Scotland, reconstructed to form the original room; historical artefacts and memorabilia; early colonial rose mahogany chair constructed by convict artisans for Governor Macquarie. Associated exhibition and display cabinets.

**Full descriptive details:** [www.library.mq.edu.au/lmr](http://www.library.mq.edu.au/lmr)

**Visits:** individual appointment and adult education programs by prior arrangement.



Macquarie chair c.1820



## HERBARIUM

The Herbarium is a collection of dried plant specimens, including marine algae, mosses and liverworts, lichens, ferns, conifers and flowering plants. The collection has been established for the use of staff and students and is also available to the wider community by prior arrangement with the curators. The Herbarium is located in Room 148 in Building E8C.

## UNIVERSITY ART COLLECTION

The Macquarie University Art Collection is displayed throughout the campus to stimulate and inspire students, staff and visitors to the University and to enhance the physical, working environment. The Macquarie University Art Collection includes artists such as Arthur Boyd, John Brack, Janet Dawson, Paula Dawson, Ian Fairweather, Rosella Namok, Sidney Nolan, Fred Williams, and many more.

**Donations:** The University Art Gallery welcomes donations of art works or bequests that fall within the acquisition policy guidelines. Culturally significant items can be accepted under the Australian Government's Cultural Gifts Program.



Billy Thomas  
*'Waterholes and Sandhills in the Great Sandy Desert', 2000*  
ochres on canvas  
Macquarie University Art Collection  
Purchased Phillips 2001



James Gleeson  
*'Untitled', c.1952*  
oil on canvas  
Macquarie University Art Collection  
Gift from Mrs HJ Cantwell 1989



## UNIVERSITY ART GALLERY

**Themes:** The University Art Gallery presents a diverse range of exhibitions aimed to impart knowledge, inspire ideas and stimulate discussion.

Exhibitions are developed that reflect a multi disciplinary style to include aspects of science, history, media and culture that are often linked with teaching and research at the University.

The exhibition program aims to create a broader understanding of visual culture to the wider community and its importance to education and research.

The University Art Gallery delivers a wide range of public programs in association with each exhibition that include artists, curator's talks, seminars, forums, workshops, poetry readings, dance and music. The public programs are designed for viewers to connect, reflect and activate their own senses and meanings to the exhibits on display.

## 1 Museum of Ancient Cultures

**Location:** Building X5B, third floor  
**Opening Hours:** Monday – Friday 9.30am–4.30pm (appointments recommended – other times by arrangement)  
**Contact:** Karl Van Dyke  
**Phone:** 02 9850 9263  
**Fax:** 02 9850 9267  
**Email:** [karl.vandyke@mq.edu.au](mailto:karl.vandyke@mq.edu.au)  
**Website:** <http://www.mac.mq.edu.au>

## 6 Biological Sciences Museum

**Location:** Building E8B, ground floor  
**Opening hours:** Monday – Friday 9am–5pm (appointments recommended)  
**Curator Biology Museum:** Penny McCracken, Andrew Simpson  
**Phone:** 02 9850 8249; 02 9850 8183  
**Fax:** 02 9850 8245  
**Email:** [penny.mccracken@mq.edu.au](mailto:penny.mccracken@mq.edu.au); [andrew.simpson@mq.edu.au](mailto:andrew.simpson@mq.edu.au)  
**Curator Aboriginal Technology:** Jim Kohen  
**Phone:** 02 9850 8138  
**Fax:** 02 9850 8245  
**Email:** [jim.kohen@mq.edu.au](mailto:jim.kohen@mq.edu.au)

## 2 Australian History Museum

**Location:** Building W6A, room 126 (ground floor)  
**Opening Hours:** Mon, Tues, Thurs, Fri 9.30–4.30, Wed 9am–12pm (these hours are subject to change, bookings recommended)  
**Contact:** Tracy Sullivan  
**Phone:** 02 9850 8870  
**Fax:** 02 9850 6594  
**Email:** [tracy.sullivan@humn.mq.edu.au](mailto:tracy.sullivan@humn.mq.edu.au)  
**Website:** <http://www.austhistmuseum.mq.edu.au>

## 7 Lachlan Macquarie Room

**Location:** Level 1 (lowest floor) Library  
**Opening Hours:** By arrangement or ask at the Information Desk (Level 2)  
**Contact:** Robin Walsh  
**Phone:** 02 9850 7554  
**Email:** [robin.walsh@library.mq.edu.au](mailto:robin.walsh@library.mq.edu.au)  
**Website:** <http://www.lib.mq.edu.au/lmr/index.html>

## 3 Sculpture Park

**Location:** Across entire University campus.  
**Opening Hours:** Daylight, seven days for self-guided tours; Guided tours can be arranged Monday–Friday, 10am–5pm.  
**Visits:** Self-guided tours can be taken, following the location map and list of works available from the art gallery website: [www.artgallery.mq.edu.au](http://www.artgallery.mq.edu.au). Pre-arranged tours also available by contacting Kirri Hill by phone or email below.  
**Curator:** Kirri Hill  
**Phone:** 02 9850 7437  
**Fax:** 02 9850 7565  
**Email:** [khill@vc.mq.edu.au](mailto:khill@vc.mq.edu.au)  
**Website:** <http://www.artgallery.mq.edu.au> (map and list of works; photographic tour and interview with founding curator)

## 8 Herbarium

**Location:** Room 148 in Building E8C  
**Curator:** Alison Downing, Barbara Rice  
**Phone:** 02 9850 8197, 02 9850 8192  
**Fax:** 02 9850 8245  
**Email:** [adowning@ma.bio.mq.edu.au](mailto:adowning@ma.bio.mq.edu.au), [brice@bio.mq.edu.au](mailto:brice@bio.mq.edu.au)  
**Website:** <http://www.bio.mq.edu.au/herbarium/>

## 4 Earth Sciences Museum

**Location:** Building ESA, ground floor adjacent to the Earth Sciences Garden.  
**Opening Hours:** Monday – Friday 9am–5pm (appointments recommended)  
**Visits:** Tours combined with other museums at Macquarie are a specialty. Pre-arranged tours including a laboratory component of relevance to the Stage 6 Earth and Environmental Science syllabus are available.  
**Contact:** Andrew Simpson  
**Phone:** 02 9850 8183  
**Fax:** 02 9850 9671  
**Email:** [asimpson@els.mq.edu.au](mailto:asimpson@els.mq.edu.au)

## 9 University Art Collection

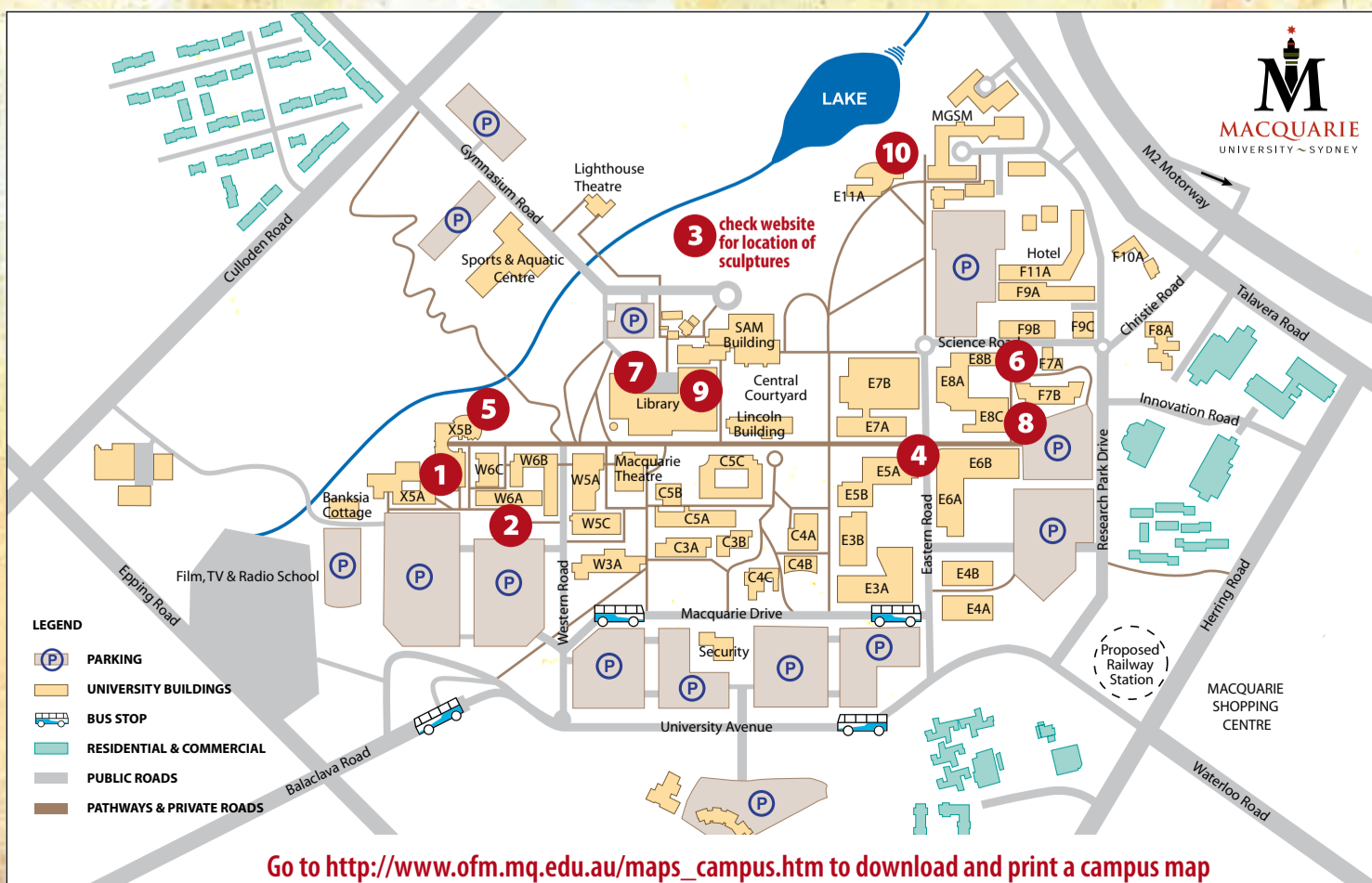
**Location:** Mainly in the University Library  
**Opening Hours:** Library Hours (usually Monday – Thursday 8am–10pm, Friday 8am–6pm, Saturday & Sunday 9am–5pm; walking tours by appointment)  
**Contact:** Rhonda Davis  
**Phone:** 02 9850 7437  
**Fax:** 02 9850 7565  
**Email:** [rdavis@vc.mq.edu.au](mailto:rdavis@vc.mq.edu.au)

## 5 IEC Art Collection

**Location:** Building X5B  
**Curator:** Margaret White  
**Phone:** 02 9850 9837  
**Email:** [margaret.white@mq.edu.au](mailto:margaret.white@mq.edu.au)

## 10 University Art Gallery

**Location:** Ground Floor E11A  
**Curator:** Rhonda Davis and Kirri Hill  
**Phone:** 02 9850 7437  
**Fax:** 02 9850 7565  
**Email:** [rdavis@vc.mq.edu.au](mailto:rdavis@vc.mq.edu.au)  
**Opening Hours:** Monday – Friday 10am – 5pm and Saturday 10am – 4.00pm during major exhibitions (appointments recommended)  
**Current exhibitions:** <http://www.artgallery.mq.edu.au>



Go to [http://www.ofm.mq.edu.au/maps\\_campus.htm](http://www.ofm.mq.edu.au/maps_campus.htm) to download and print a campus map